

# INSTALLATION KIELRADIO

## WINDOWS XP

## ENGLISH

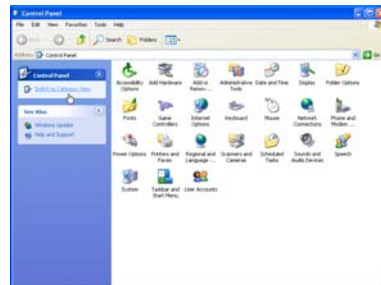
		2
1	Installation of Modem.....	3
1.1	Open Control Panel.....	3
1.2	If necessary switch to Category View.....	3
1.3	Choose Printers and other Hardware .....	3
1.4	Choose Phone and Modem Options.....	3
1.5	If necessary fillout and OK .....	4
1.6	Choose Modems.....	4
1.7	Choose Don't detect my Modem (next).....	4
1.8	Choose Standard with 28800 bps.....	4
1.9	Mark your Com-Port and next. ....	5
1.10	Choose Finish.....	5
2	Modemconfiguration.....	<b>Error! Bookmark not defined.</b>
2.1	Choose Properties of Standard Modem .....	5
2.2	Choose Modem .....	5
2.3	Validate the settings and choose Advanced.....	6
2.4	Make the following entry:.....	6
2.5	Validate the settings and choose Advanced .....	7
2.6	Make entry done and choose next.OK .Modem Settings are finished.....	7
3	Make the DUN.....	7
3.1	Choose Network and Internet Connections .....	7
3.2	Choose Set up or change your Internet connection.....	7
3.3	Choose Add.....	8
3.4	Choose Dial-up to private network.....	8
3.5	If more modems available choose only the Standard 28800 .....	8
3.6	Make entry done and choose next.....	8
3.7	Make entry done and choose Finish.....	9
4	DUN Configuration.....	9
4.1	Choose Settings for KIEL-SSB .....	9
4.2	Make entry Username and Password afterwards choose Properties.....	9
4.3	Validate the settings choose Options .....	10
4.4	Validate the settings choose Security.....	10
4.5	Validate the settings choose Networking.....	10
4.6	Validate the settings choose Settings.....	11
4.7	Validate the settings choose OK .....	11
4.8	Choose Properties .....	11
4.9	Validate the settings choose Advanced.....	11
4.10	Validate the settings choose DNS.....	12
4.11	The advanced Properties of TCP/IP are finished, choose OK.....	12
4.12	The KIEL-SSB Settings Properties are finished, choose Advanced.....	12
4.13	Validate the settings choose OK.....	13
4.14	All needed settings have been done, close all windows. ....	13
5	Licensing the Modem.....	13
5.1	Open Hyperterminal.....	13
5.2	Choose Cancel.....	13
5.3	Choose File / Properties .....	13
5.4	Choose your Com (not the modem!) and Configure .....	14
5.5	Validate the Settings and choose OK.....	14
5.6	Choose Settings.....	14
5.7	Choose ASCII Setup.....	15
5.8	Validate the settings and choose OK .....	15
5.9	Press ESC, there should appear „cmd:“ .....	15
5.10	You have got the Licensefile .....	16
5.11	You got the code .....	16
6	Make Connection.....	17

# 1 Installation of Modem

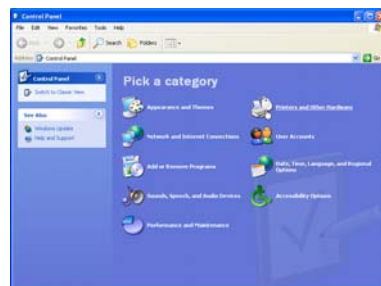
## 1.1 Open Control Panel



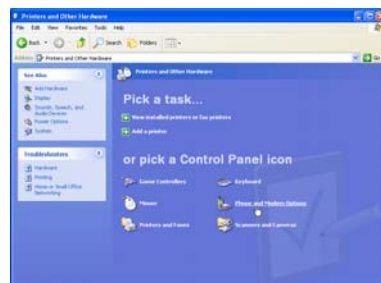
## 1.2 If necessary switch to Category View



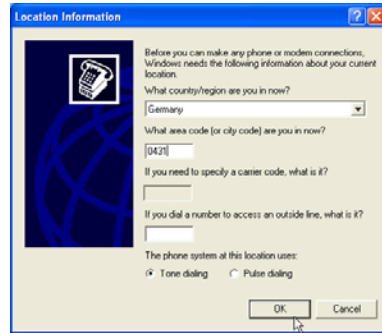
## 1.3 Choose Printers and other Hardware



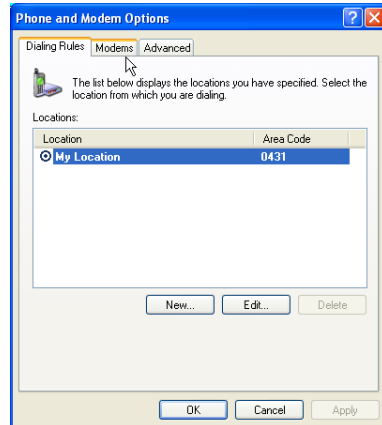
## 1.4 Choose Phone and Modem Options



## 1.5 If necessary fill out and OK



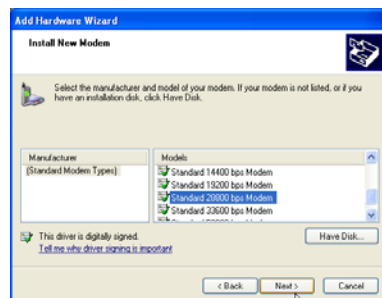
## 1.6 Choose Modems



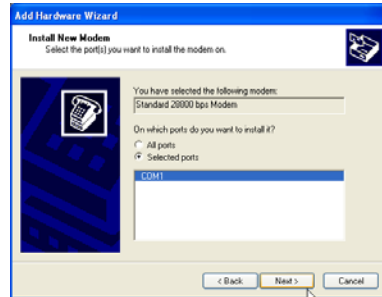
## 1.7 Choose Don't detect my Modem (next)



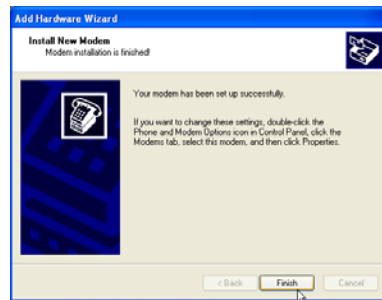
## 1.8 Choose Standard with 28800 bps



## 1.9 Mark your Com-Port and next.

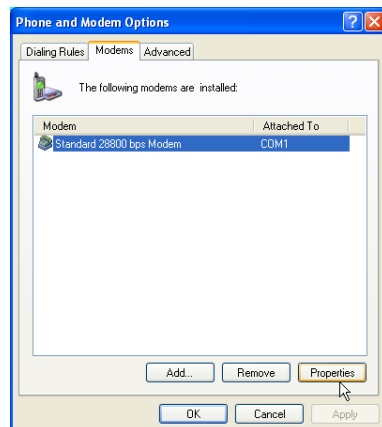


## 1.10 Choose Finish

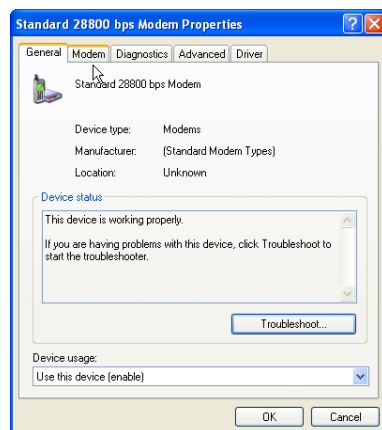


## 2 Modem configuration

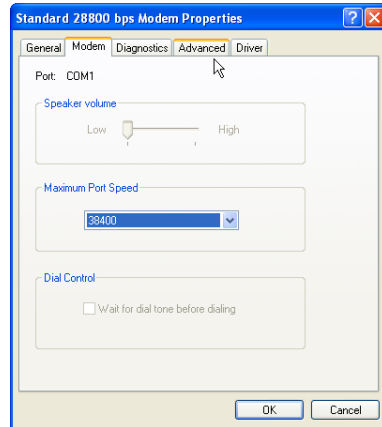
### 2.1 Choose Properties of Standard Modem



### 2.2 Choose Modem



## 2.3 Validate the settings and choose Advanced



## 2.4 Make the following entry:

\*pa200\*fa200\*myXXX:

The parameters means:

XXX: Here you have to replace with your Callsign.  
It is necessary to have the “:” at the end of Callsign.

pa200 / fa 200 These are special values, depending on your radio.  
Mostly the value of pa is identical to fa.

e.g.:

250 for ICOM via ACC-Connector

650 for ICOM via MOD-AF-Connector

800 for Barrett 980

1000 for Sailor 4000

1000 for Scanti

250 for Amateurradios

e.g.:

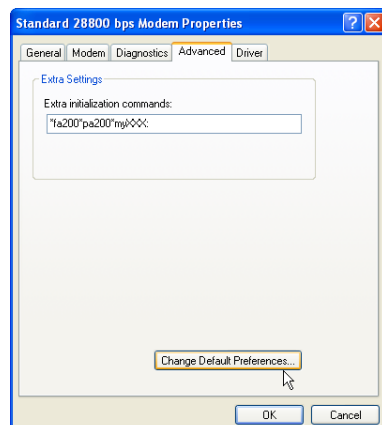
My callsign is dao I have an icom via ACC.

My commands are: \*pa250\*fa250\*mydao:

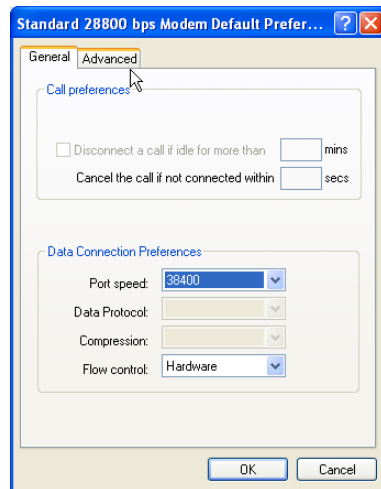
&=’ampersand’

If you have the SCS-Firmware : &#x26;#x20;to4\*ap1S38=67\*pa200\*fa200\*mycallsign:

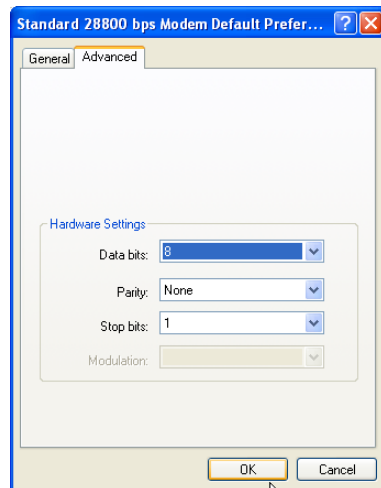
Choose Change Default Preferences



## 2.5 Validate the settings and choose Advanced .

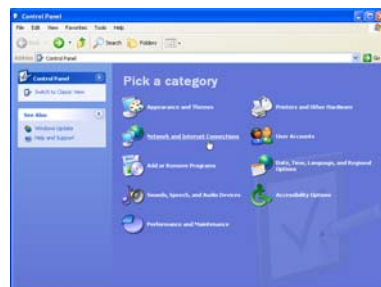


## 2.6 Make entry dao and choose next.OK .Modem Settings are finished.

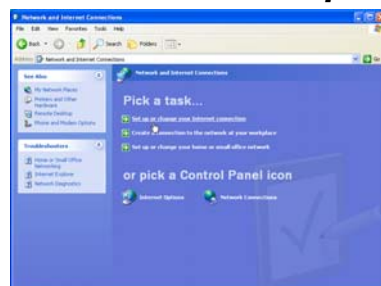


## 3 Make the DUN

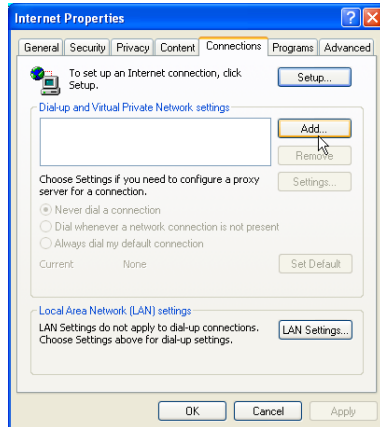
### 3.1 Choose Network and Internet Connections



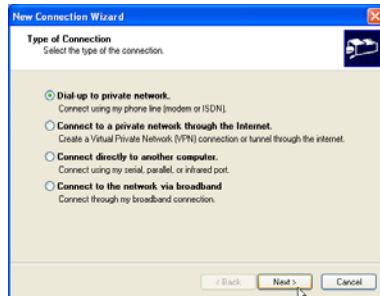
### 3.2 Choose Set up or change your Internet connection



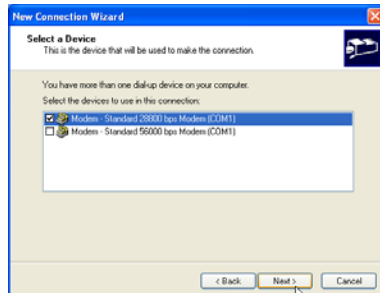
### 3.3 Choose Add



### 3.4 Choose Dial-up to private network



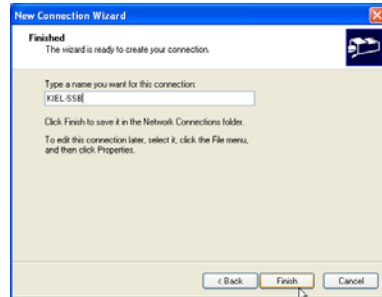
### 3.5 If more modems available choose only the Standard 28800



### 3.6 Make entry dao and choose next.



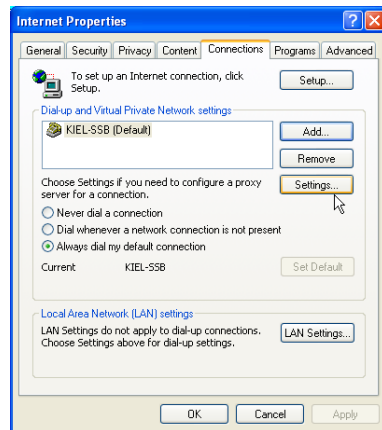
### 3.7 Make entry dao and choose Finish.



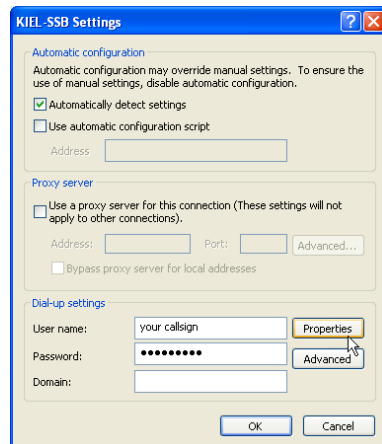
## 4 DUN Configuration

Repeat Steps 3.1 3.2 3.3

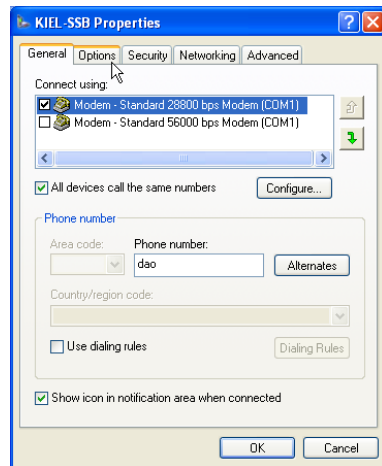
### 4.1 Choose Settings for KIEL-SSB



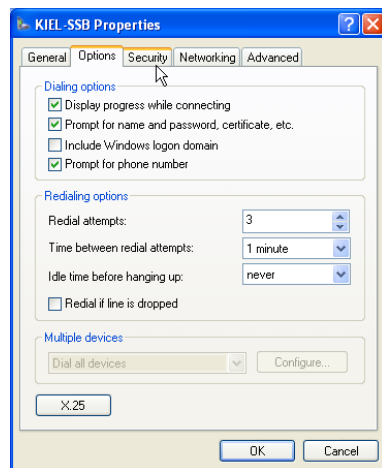
### 4.2 Make entry Username and Password then choose Properties



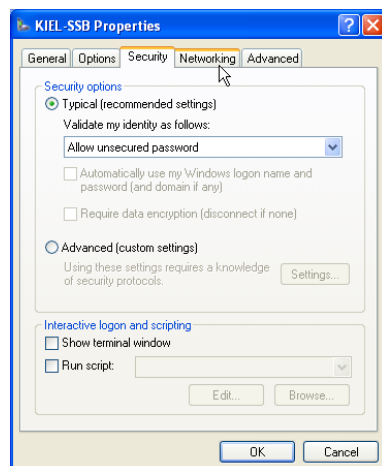
### 4.3 Validate the settings choose Options



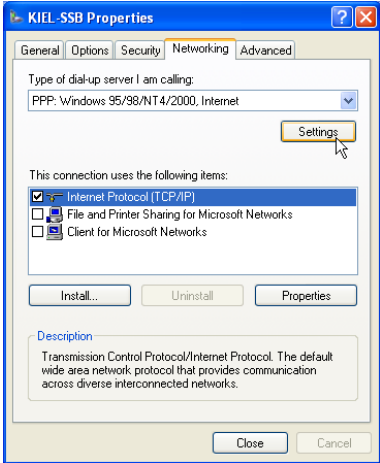
### 4.4 Validate the settings choose Security



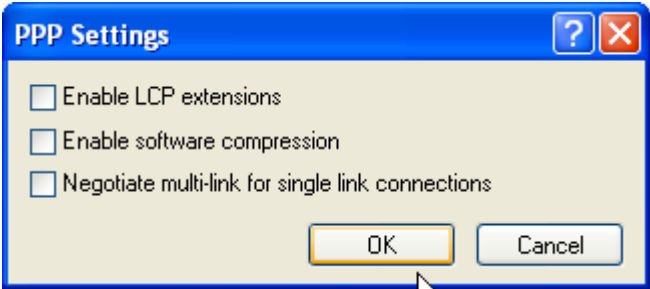
### 4.5 Validate the settings choose Networking



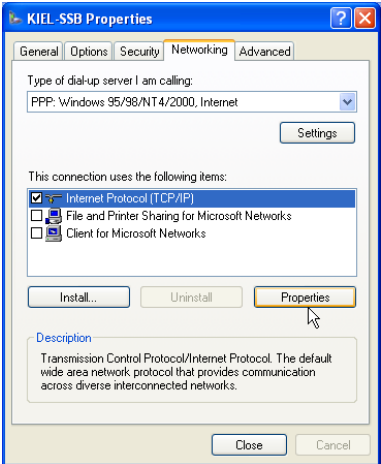
**4.6 Validate the settings choose Settings**



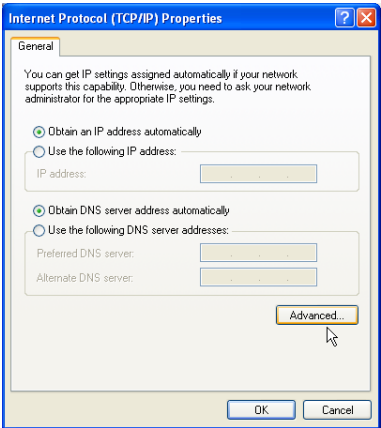
**4.7 Validate the settings choose OK**



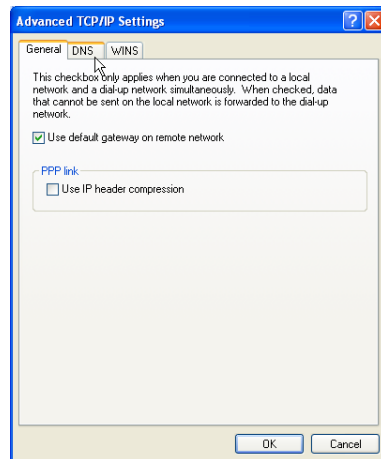
**4.8 Choose Properties**



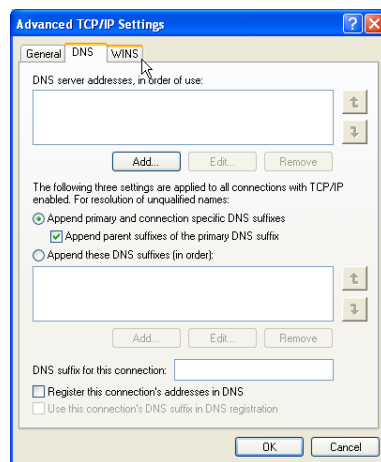
**4.9 Validate the settings choose Advanced**



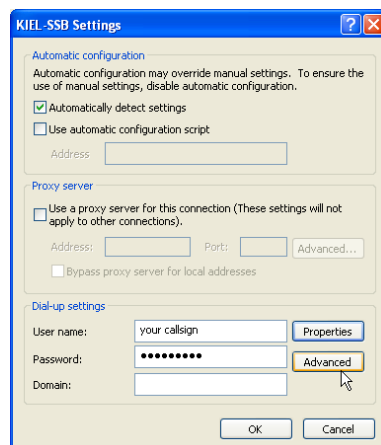
#### 4.10 Validate the settings choose DNS



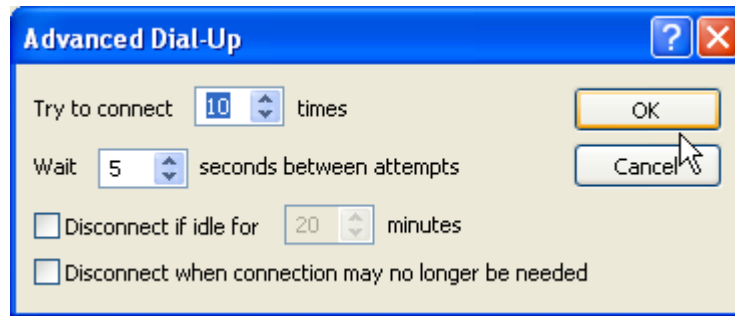
#### 4.11 The advanced Properties of TCP/IP are finished, choose OK



#### 4.12 The KIEL-SSB Settings Properties are finished, choose Advanced



#### 4.13 Validate the settings select OK



4.14 All needed settings have been done, close all windows.

## 5 Licensing the Modem

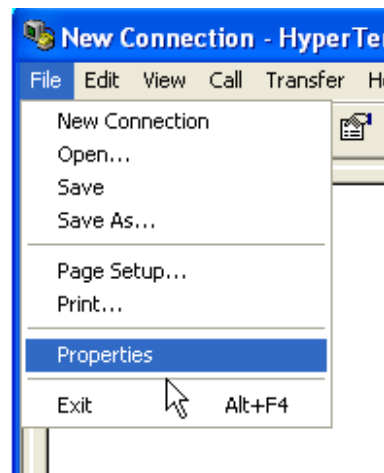
### 5.1 Open Hyperterminal



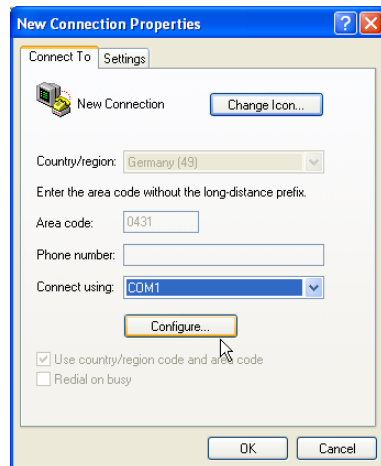
### 5.2 Choose Cancel



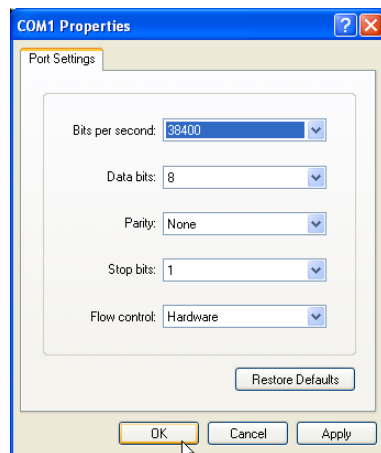
### 5.3 Choose File / Properties



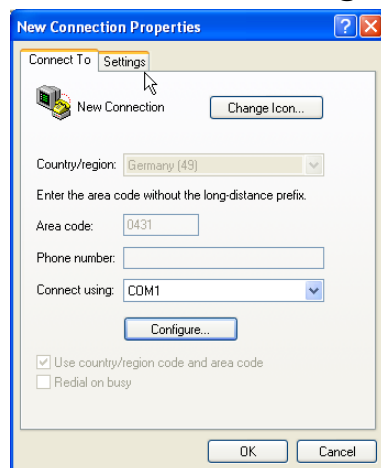
## 5.4 Choose your Com (not the modem!) and Configure



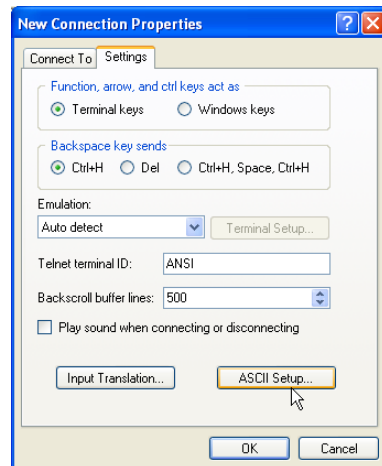
## 5.5 Validate the Settings and choose OK



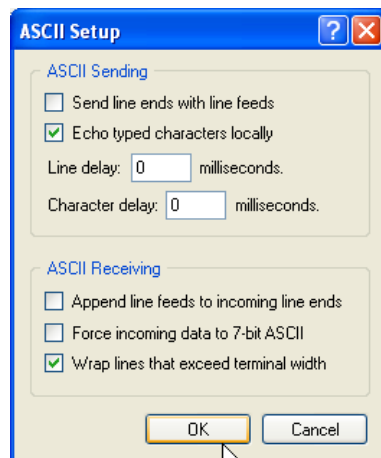
## 5.6 Choose Settings



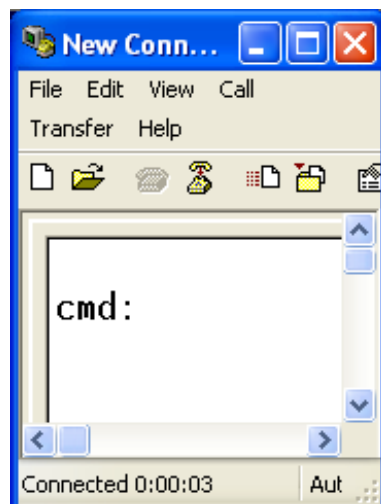
## 5.7 Choose ASCII Setup



## 5.8 Validate the settings and choose OK

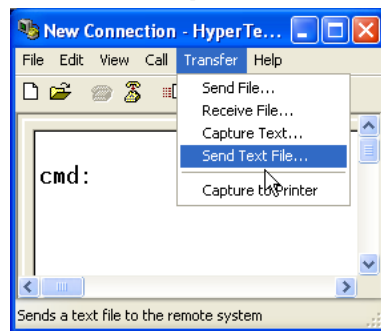


## 5.9 Press ESC, there should appear „cmd:“

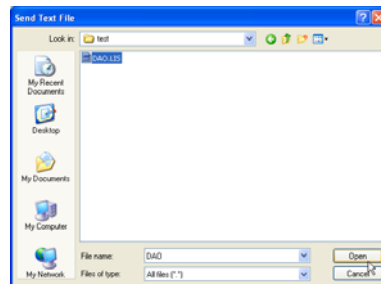


## 5.10 You have got the License file

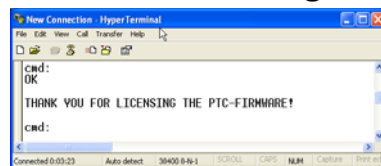
### 5.10.1 Open Transfer / Send Text File



### 5.10.2 Search your License file (Files of Type \*.\* ) and choose open

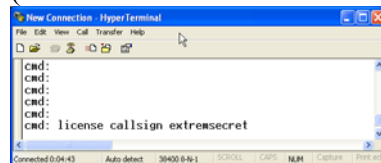


### 5.10.3 Licensing finished.



## 5.11 You got the code

### 5.11.1 Entry license Make callsign extremsecret (extremsecret is the code delivered by KIELRADIO or Partners)



Licensing finished.

You might want to save the HyperTerminal-settings with File/Save.  
You might want to check the License with: license [enter]

### 5.11.2 Known Problems

Make sure that no Anti-Virus-Program especially "Norton" is installed.  
If you have NIC in your Computer, make sure that they run in DHCP.  
(also PCMCIA-NIC and Wireless-LAN)  
Make sure, that you have the latest Frequencies of Kiel radio or GLN  
Our passwords are case-sensitive.

## 6 Make Connection

Supposition: Receiving Free signal on one of our Frequencies. Green LED at Modem.

